

12.8V | 60Ah | Li-FePO4



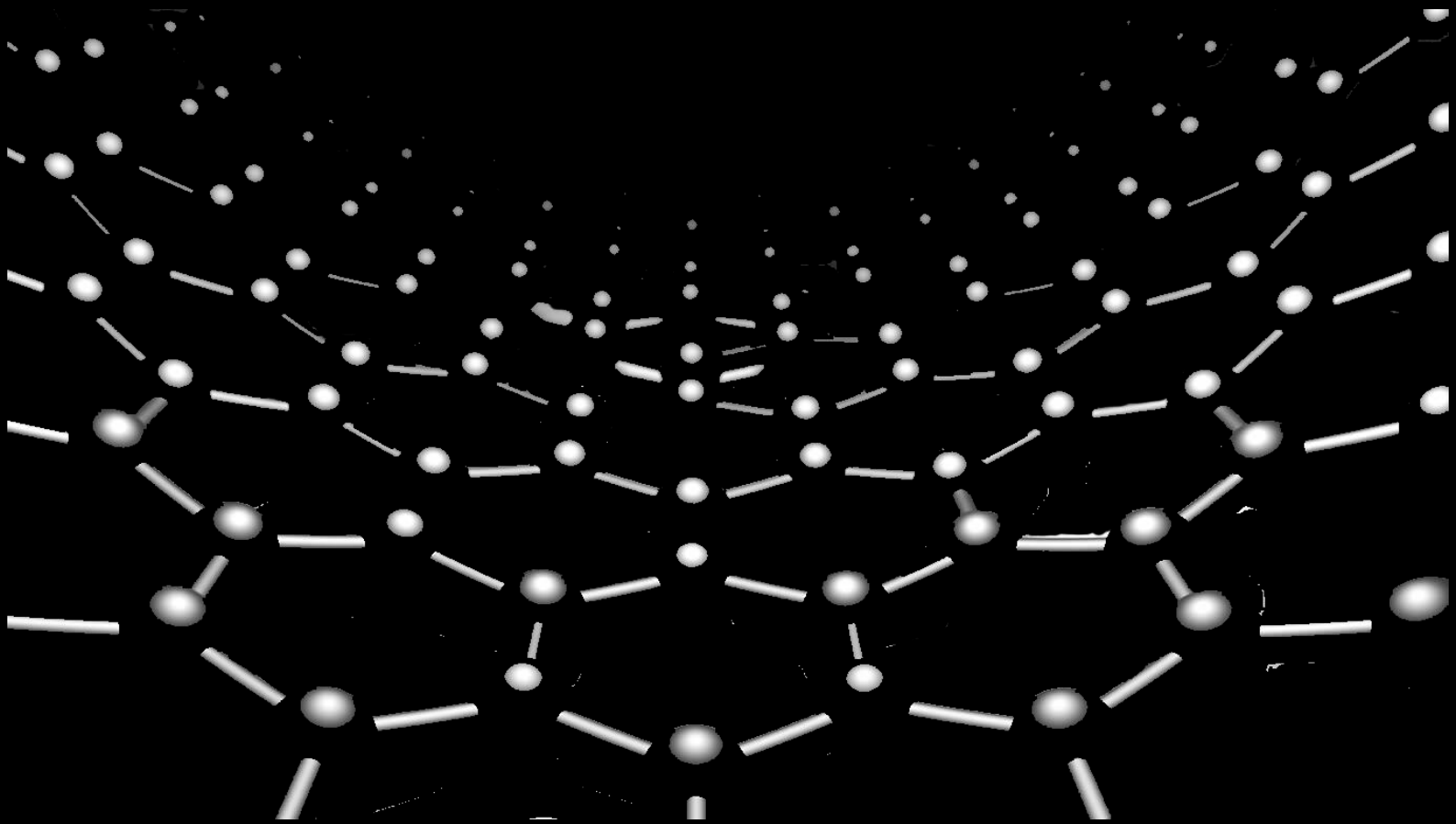
E-MMORTAL AUTOMOTIVES

E-MMORTAL AUTOMOTIVES

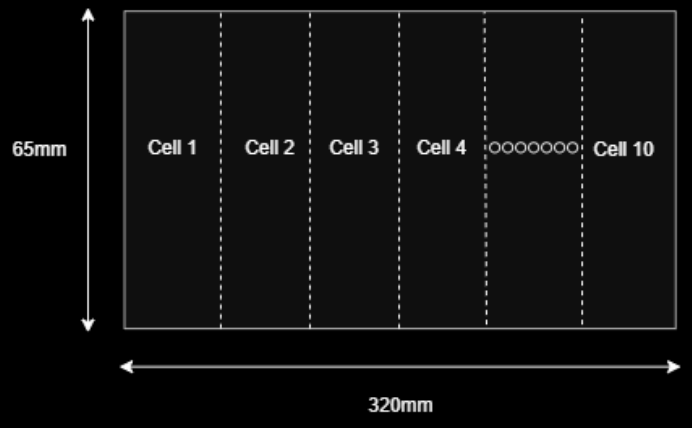
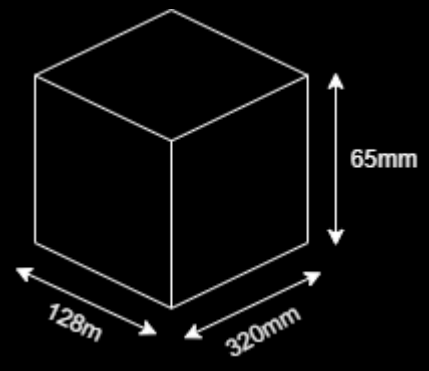
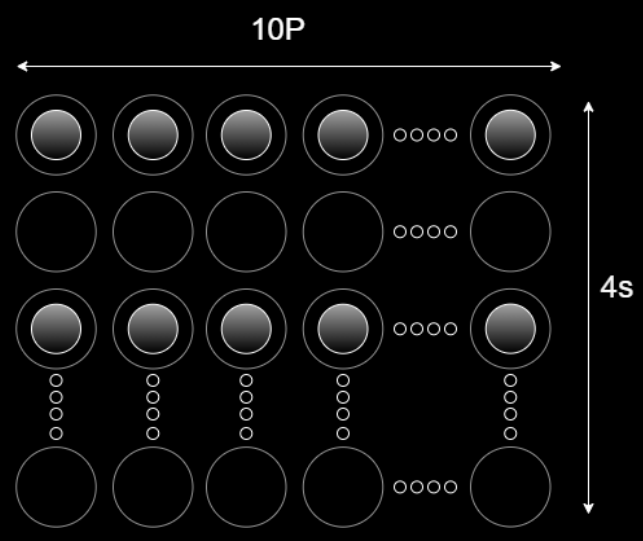
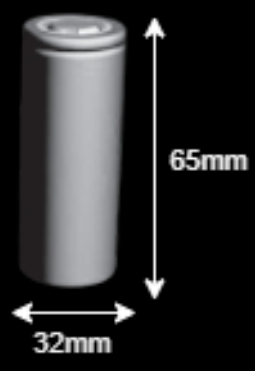


E-MMORTAL LITHIUM ION BATTERY

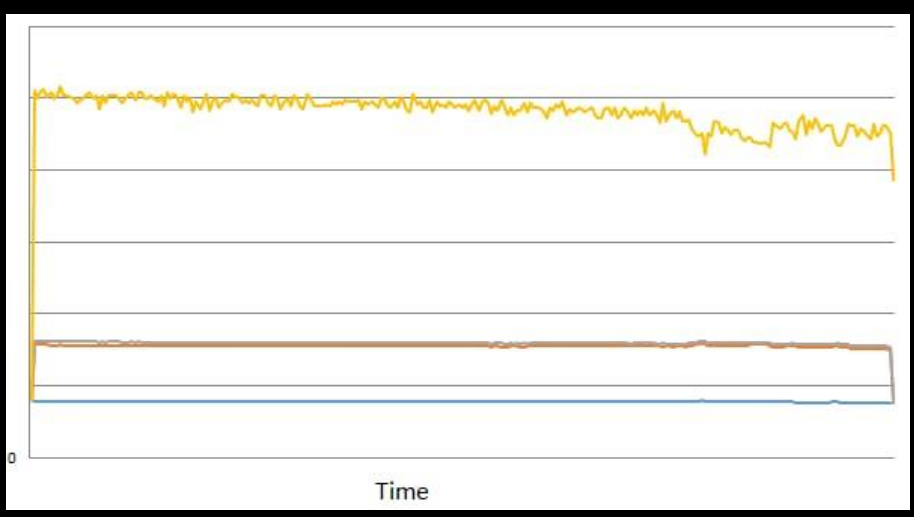
#ETERNAL_FLOW_OF_ENERGY



BATTERY CONFIGURATION



Test Results:



SPECIFICATION

| Description | Technical Specification | Remark |
|-----------------------------------|-------------------------|--|
| Nominal Capacity | 60 Ah | Capacity according to standard charge and discharge. |
| Nominal Voltage | 12.8 V | The average value of working voltage during the whole discharge process. |
| Nominal Wattage | 768Wh | |
| Type of Cell | Cylindrical | Cell 32700 |
| Capacity of Individual Cell | 3.2V – 6000mAh | A Grade Cell with IR < 9mΩ. |
| Configuration | 4S-10P | 4 in series and 10 in parallel. |
| Charge Current | Up to 12A | Constant charge. |
| Discharge Current | Up to 12A | Constant discharge. |
| Peak Discharge | Up to 160A | Peak discharge for 3 sec. |
| Charge Cut-off Voltage | 14.6V | Protected with balancing BMS. |
| Discharge Cut-off Voltage | 11.2V | Protected with balancing BMS. |
| Working Temperature (Charging) | 0-40°C | Under constant charge. |
| Working Temperature (Discharging) | 0-40°C | Under constant discharge. |
| Weight | 6.5KG | Approx. |
| Dimensions (Approx.) | Length(mm) | 128mm |
| | Width(mm) | 320mm |
| | Height(mm) | 65mm |
| Cycle Life | ≥2000 | |
| Storage Temperature | 1-3 Months | 20-45°C |
| | 3-6 Months | 20-35°C |
| Battery (LCV) | Provided | |
| Battery (HCV) | Provided | |
| Battery Reverse Protection | Provided | |
| Packing Type | PVC material | PVC material |
| Output Cable | Provided | 4sq. mm |

E-mmortal Automotives Pvt. Ltd.



emmortalautomotives.com



info@emmortalautomotives.com



+91 90288 12136



ASM-03, Ashwin Nagar Service Rd, Ashwin Nagar, Nashik, Maharashtra 422009.