

72V | 80Ah | Li-Ion



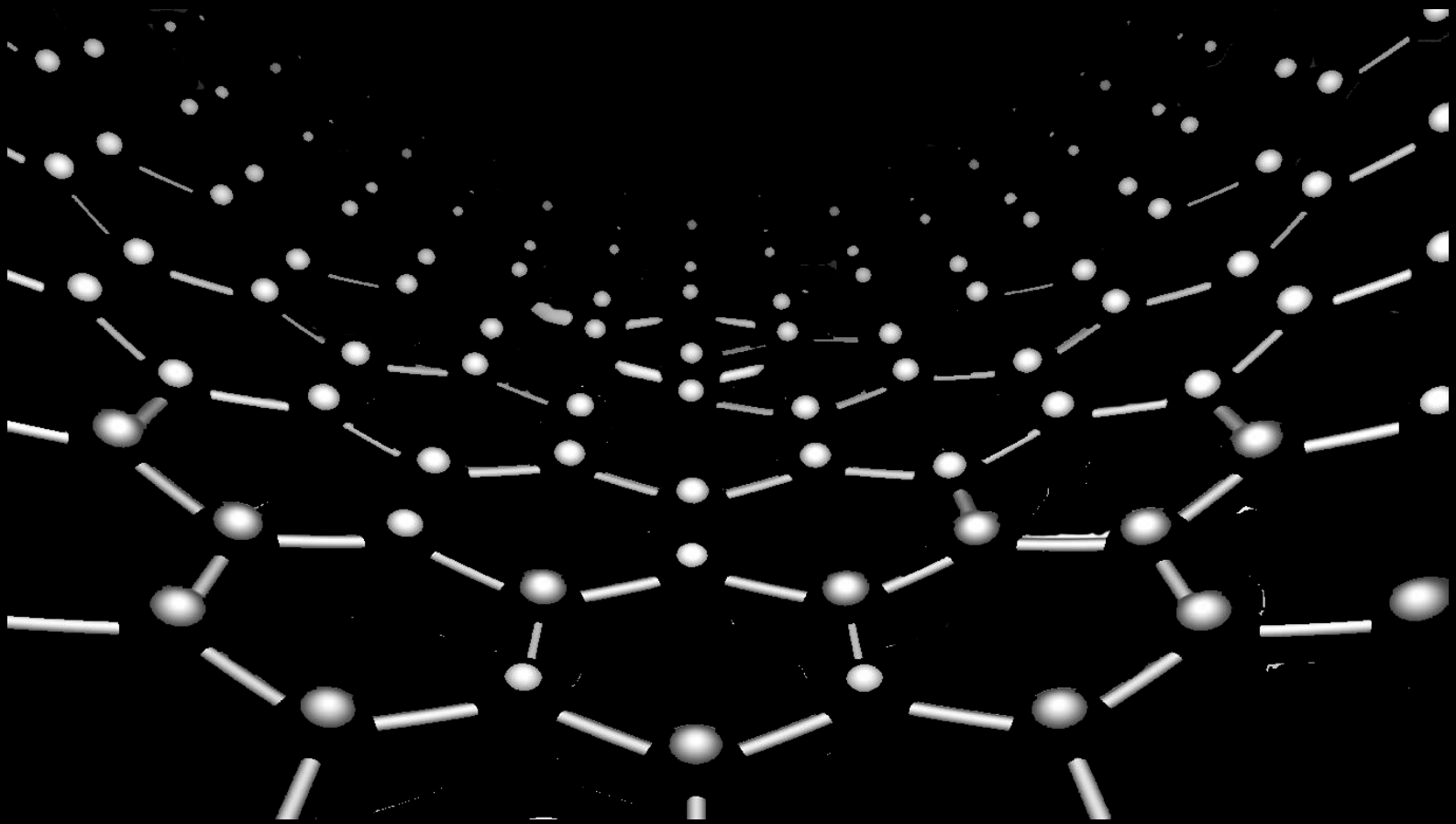
E-MMORTAL AUTOMOTIVES

E-MMORTAL AUTOMOTIVES

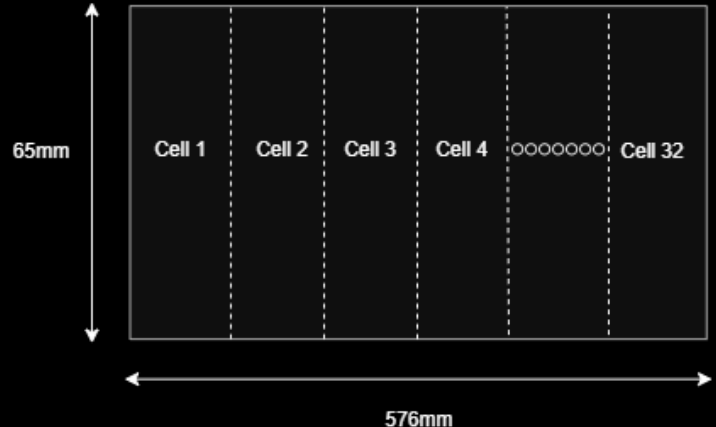
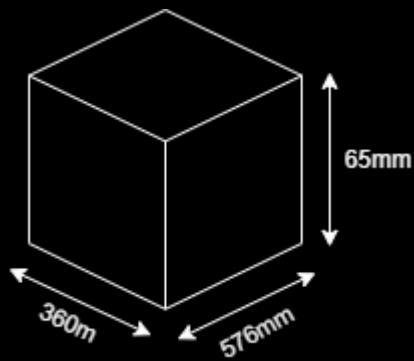
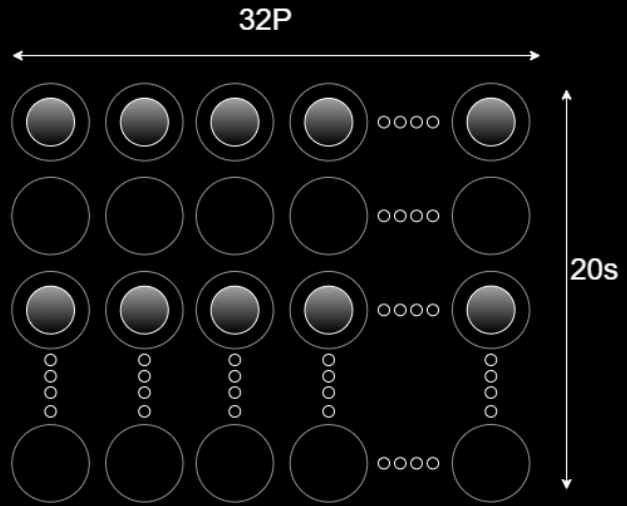
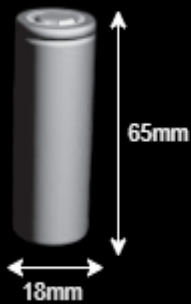


E-MMORTAL LITHIUM ION BATTERY

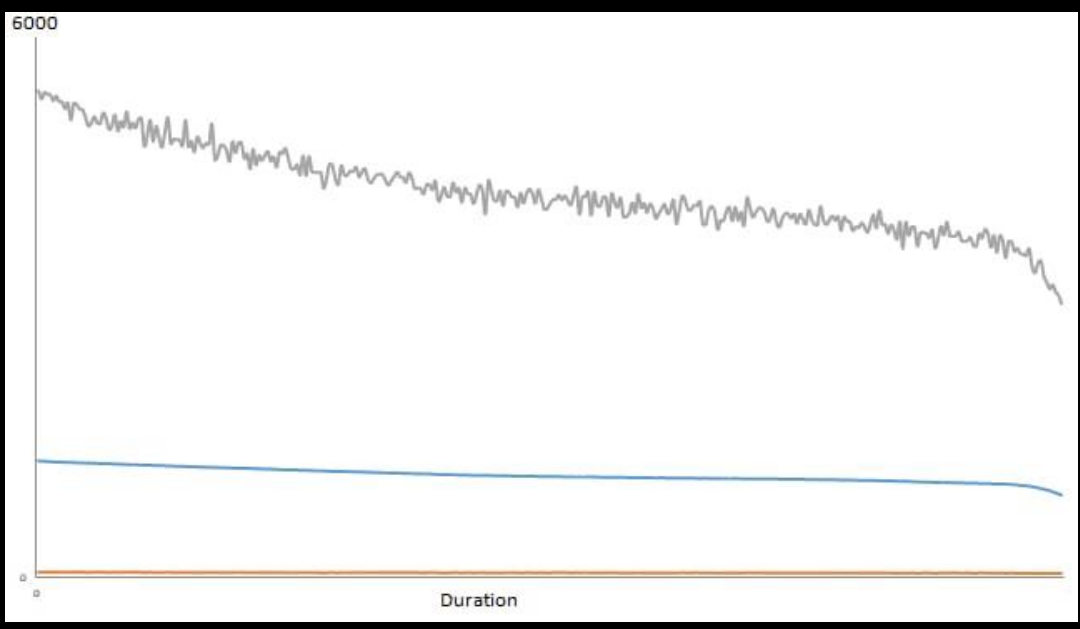
#ETERNAL_FLOW_OF_ENERGY



BATTERY CONFIGURATION



Test Results:



SPECIFICATION

Description	Technical Specification	Remark
Nominal Capacity	80Ah	Capacity according to standard charge and discharge.
Nominal Voltage	72V	The average value of working voltage during the whole discharge process.
Nominal Wattage	5760Wh	
Type of Cell	Cylindrical	Part No. 18650
Capacity of Individual Cell	3.6V – 2500mAh	A Grade Cell with IR < 30mΩ.
Configuration	20S-32P	20 in series and 32 in parallel.
Charge Current	Up to 16A	Constant charge.
Discharge Current	Up to 16A	Constant discharge.
Peak Discharge	Up to 200A	Peak discharge for 3 sec.
Charge Cut-off Voltage	84V	Protected with balancing BMS.
Discharge Cut-off Voltage	55V	Protected with balancing BMS.
Working Temperature (Charging)	0-45°C	Under constant charge.
Working Temperature (Discharging)	-20-60°C	Under constant discharge.
Weight	30KG	Approx.
Dimensions (Approx.)	Length(mm)	360mm
	Width(mm)	576mm
	Height(mm)	65mm
Cycle Life	≥600	
Storage Temperature	1-3 Months	20-45°C
	3-6 Months	20-35°C
Battery (LCV)	Provided	
Battery (HCV)	Provided	
Battery Reverse Protection	Provided	
Packing Type	PVC material	PVC material
Output Cable	Provided	6sq. mm*2

E-mmortal Automotives Pvt. Ltd.



emmortalautomotives.com



info@emmortalautomotives.com



+91 90288 12136



ASM-03, Ashwin Nagar Service Rd, Ashwin Nagar, Nashik, Maharashtra 422009.